

Libec

SWIFTJIB	New
REMOTE HEAD	New
Control Unit	New
Remote Control	New
Accessory Support	
Tracking Rails	

Libec

HEIWA SEIKI KOGYO CO.,LTD. - Headquarters

978-1 Nishibukuro, Yashio-City, Saitama, 340-0833 Japan
TEL: +81(0) 48 995 1301
FAX: +81(0) 48 997 0804

www.libec-global.com

Libec Sales of America, Inc - U.S. Sales office

377 Van Ness Av., Suite 1201 Torrance, CA 90501 USA
TEL: +1 310 787 9400
FAX: +1 310 787 9422

www.libecsales.com

12/02

Specifications are subject to change without notice. The colors in this brochure may differ from actual products because of the printing color inks or photographic conditions.



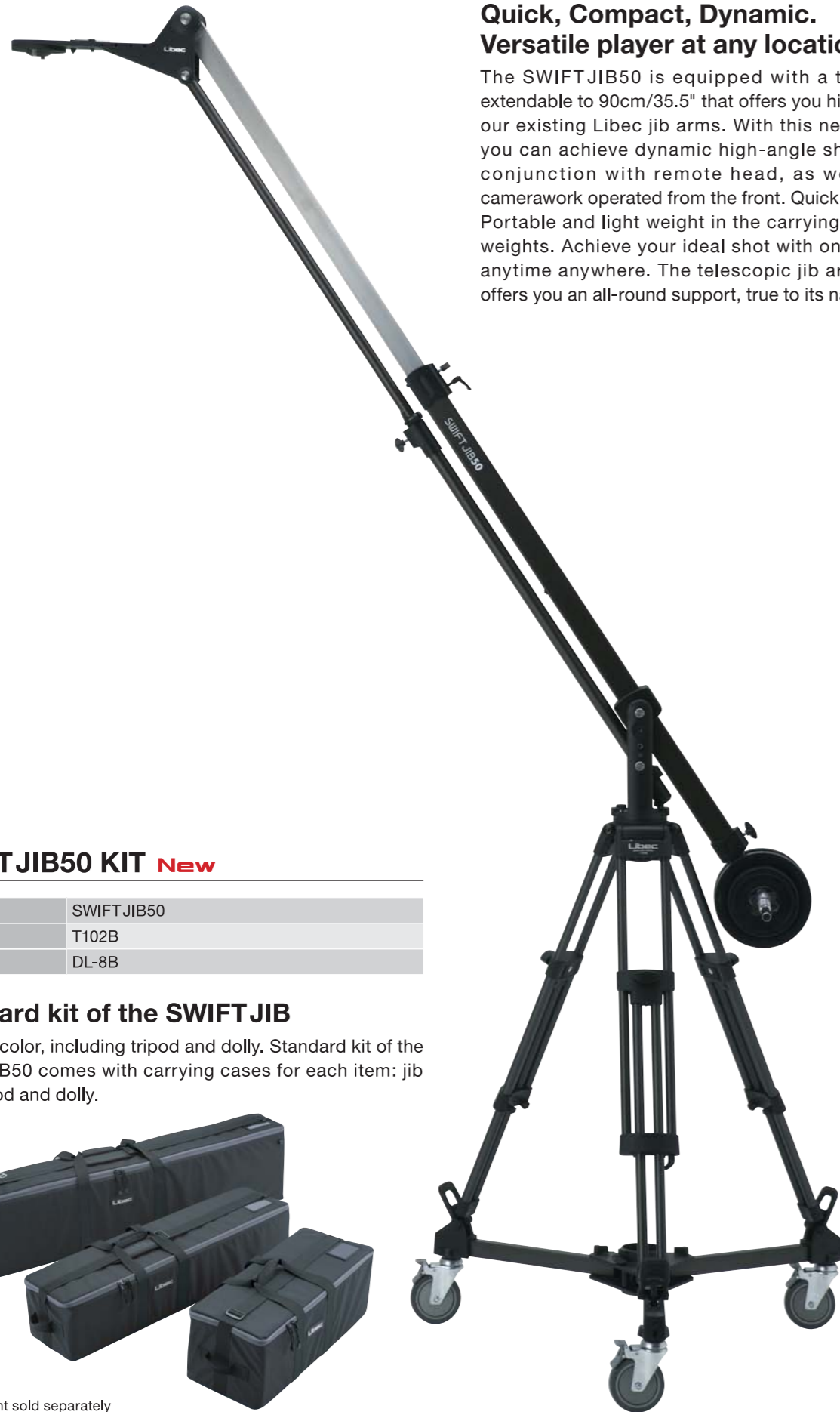
Your One - Stop - Shop

Going low budget? Shooting with a small crew? Whatever the situation, the perfect shot is always desired. To pursue your complete satisfaction, you can rely on Libec's wide selection of camera support equipment: Jib arms, remote heads, tripods, accessory supports, remote controls, and tracking rails ... Libec exceeds all your expectations with professional camera support for all.



**Quick, Compact, Dynamic.
Versatile player at any location.**

The SWIFTJIB50 is equipped with a telescopic arm extendable to 90cm/35.5" that offers you higher angles than our existing Libec jib arms. With this new SWIFTJIB50, you can achieve dynamic high-angle shots by using in conjunction with remote head, as well as delicate camerawork operated from the front. Quick and easy set up. Portable and light weight in the carrying case excluding crew. Achieve your ideal shot with only a small crew, anytime anywhere. The telescopic jib arm SWIFTJIB50 offers you an all-round support, true to its name.



SWIFT JIB50 KIT New

Jib arm	SWIFTJIB50
Tripod	T102B
Dolly	DL-8B

Standard kit of the SWIFT JIB

All black color, including tripod and dolly. Standard kit of the SWIFTJIB50 comes with carrying cases for each item: jib arm, tripod and dolly.



Note: Weight sold separately

SWIFT JIB50 New



- 1. Padded carrying case
- 2. SwiftJib
- 3. 75mm adapter
- 4. Adjusting weight x1kg/2.2lb

Telescopic jib-No extra arms required

The main feature of the SWIFT JIB50 is its easily adjustable telescopic arm by turning the arms' lock levers. In addition, using the supplied hexagon wrench, the arm can be slid back 30cm/12.0" towards the rear of the jib. The SWIFT JIB50 is designed to accommodate every shooting scenario including small indoor and outdoor spaces for detailed and dynamic shots accompanied by a remote head.

Designed for ease of use

1/4" and 3/8" screw holes are strategically placed on the support arm and head mount platform, and this allows ideal positioning of LCD monitor. A support column is also provided, and this allows you to attach our AS-7K accessory support on the right and left sides. Our new weight bar is designed to be used with a remote head. Control box and the HANDLE50 can be easily attached to the weight bar.



WEIGHT30 KIT New

Standard weight kit of 30kg/66.0lb:
2 sets of 15kg/33.0lb weights
(5kg/11.0lb x 2,
2.5kg/5.5lb x 2)



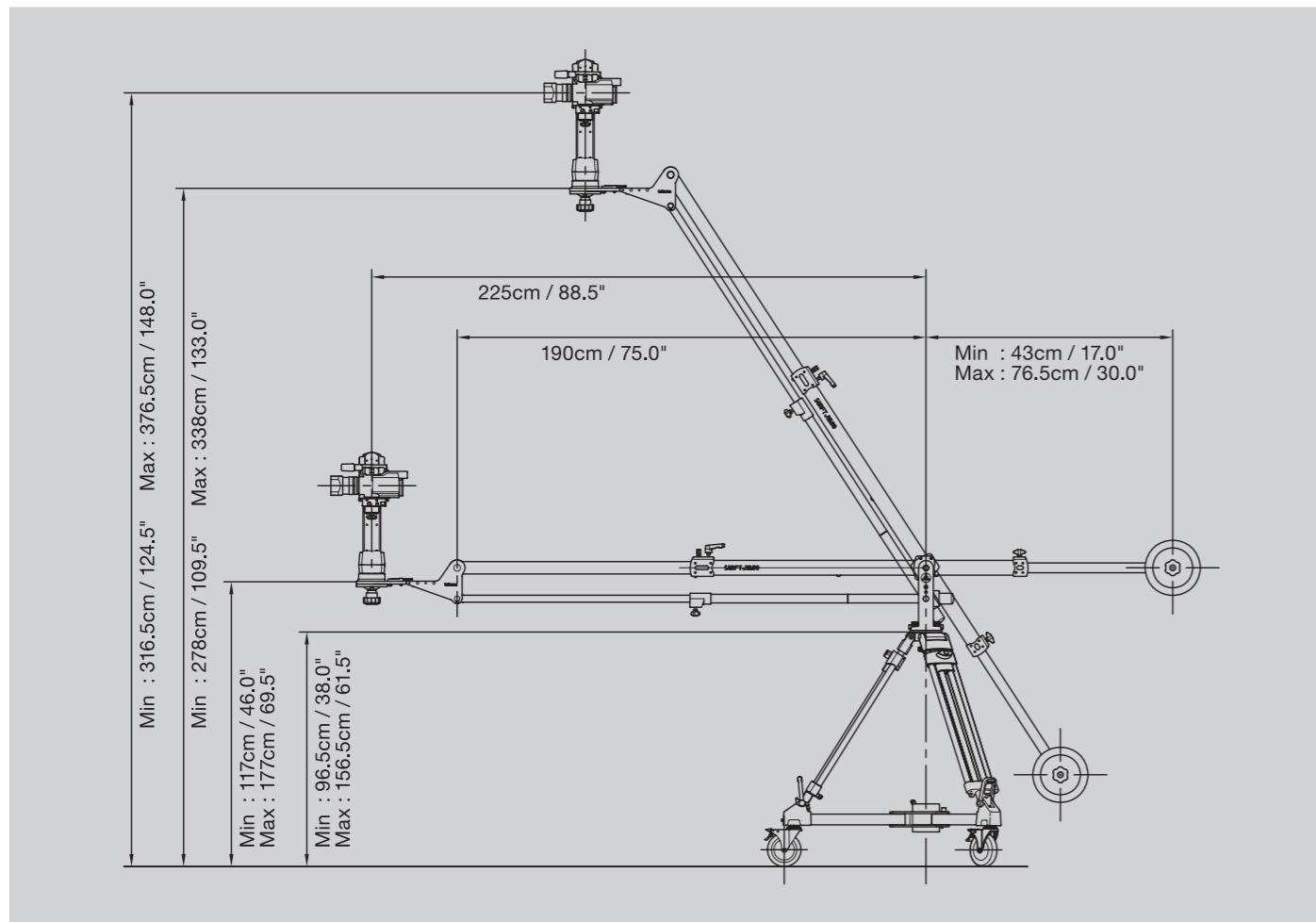
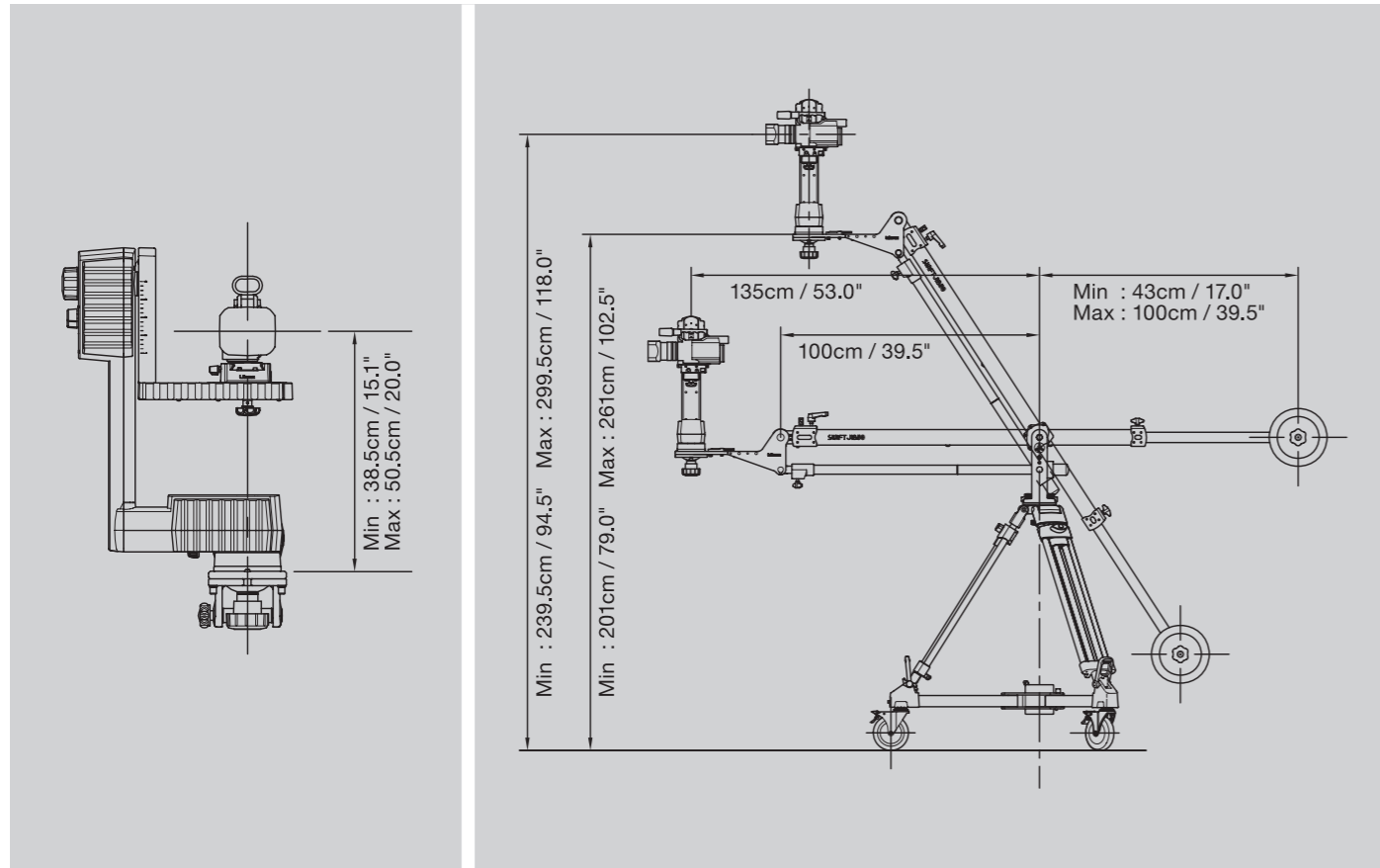
Payload	①	20kg / 44.0lb (Main arm length : 100cm / 39.5")
	②	15kg / 33.0lb (Main arm length : 145cm / 57.0")
	③	10kg / 22.0lb (Main arm length : 190cm / 75.0")
Main arm length	100 to 190cm / 39.5" to 75.0"	
Weight	16.4kg / 36.1lb	
Ball diameter	100mm	



**Clamp handle for SWIFT JIB50
HANDLE50 New**

The Handle50 can be clamped on the weight bar of the SWIFT JIB50. A remote control is attachable to the handle, this assures a smooth jib operation from the rear.





Capture your imagination from start to finish

REMO30 **New**

What is most expected of a remote head is to perfectly perform your camerawork just as you intend on remote operation. The REMO30 is a high-grade remote head that exceeds your expectations. It is equipped with a unique drive system that transmits motor power accuracy. Every movement can be traced at an ideal speed: pan, tilt, and also diagonal movement which is achieved by combining the power of pan and tilt motors. The REMO30 is splash proof, (meets IPX2

standards) it can tolerate outdoor shootings under severe climate conditions. The REMO30 is a universal remote head, it can be used with other equipment such as tripods and jib arms you already own. You can enhance added value by using this with various optional products, i.e. control unit CU30 which allows a more efficient remote operation, zoom & focus control ZFC-5HD available for LANC*(Sony/Canon) and Panasonic cameras, and other items.

Payload	5kg / 11.0lb
Weight (Pan and tilt head)	4.5kg / 9.9lb
Weight (Control box)	0.7kg / 1.5lb
360°pan/tilt speed	9sec.
Power supply	AC100-240V DC12V



*LANC is a registered trademark of Sony Corporation.

REMOTE HEAD

REMOTE HEAD

REMO30 *New*



A perfect, bird's-eye view

When mounted upside down, you can achieve a complete bird's-eye shot.



Flexible mounting on 75mm/100mm jib arms and tripods

Available for both 75mm and 100mm types. It mounts on nearly any 75mm/100mm jib arms and tripods.



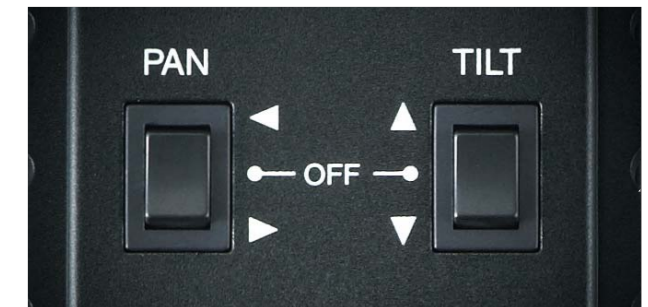
Variable speed control

An infinite variable speed control can be achieved by operating the joystick and pan & tilt speed control dials.



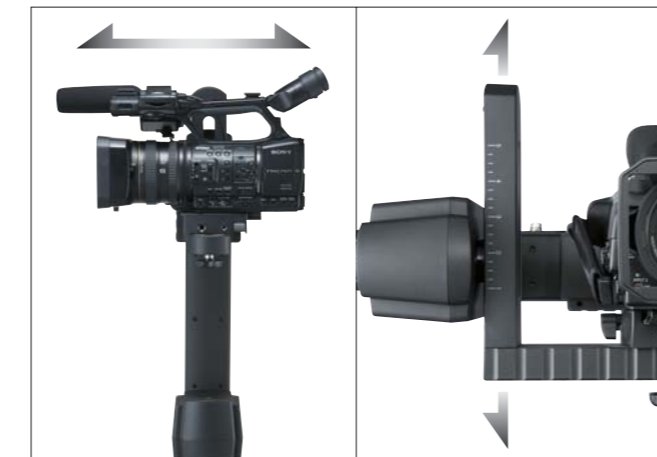
Pan & tilt lock system

Equipped with a lock system that can stop either pan or tilt motions. This enables you to focus on a single direction for an accurate operation.



Easy and accurate camera balancing

The REMO30 ensures a perfect camera balance. This prevents motor and drive stalling during tilt movements. Instead, it offers smooth camerawork at all times. Equipped with a 80mm/3.0" sliding adapter plate, which aids back and forth balancing of a camera. For center of gravity positioning, fine tune adjustments can be achieved with the tilt arm at 90 degrees.



Battery powered operations

The V-mount battery is attachable to the back side of the controller.

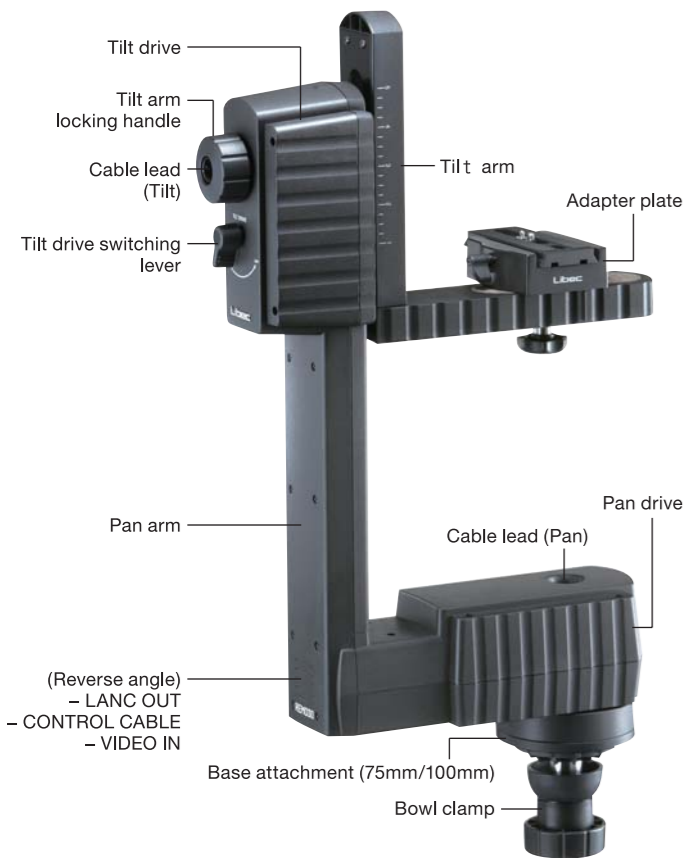


Various cables and adapters included

A variety of cables and adapters are bundled to accommodate every shooting conditions and use of camera types.



Pan and tilt head



Control box



Tangle-free cabling

Cable can be routed through the cable leads to prevent tangling, which offers a comfortable operation.



All-in-one cable connection

Pan & tilt control, LANC, and monitor cables are combined in a single control cable. Pan & tilt head and control box can also be connected with this single cable, by which a smart and simple cabling design is realized.



Control cable for head, LANC and monitor **CABLE500 *New***

Length 5m / 16.5'



Control cables can be connected to extend up to 30m/99.0' in length.



Note: When using the control cable, the BNC connection is recommended for image checks only. Recorders are not recommended, as the control cable connection may cause some noise. HDMI to monitor connections require the use of the supplied HDMI cable.

Note: If the cable length exceeds 30m/99.0', it may cause noticeable noise on the monitor.

Control Unit

CU30 **New**

1. Carrying case
2. Vest
3. T-bar (Main bar + Support pipe)
4. Handle
5. Tripod adapter

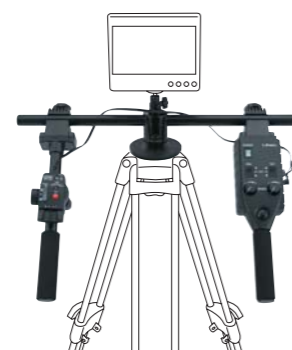
The CU30 is a remote control unit for the REMO30. The main advantage of this unit is that while one person concentrates on handling a crane or a jib arm, the other person can operate the remote head with the control box. The remote head operator can wear a Libec vest, attach the T-bar to it, while having the REMO30 control box on the right hand, the ZFC-5HD zoom and focus control on the left, and a monitor with a ball head attached at the front. This allows the remote head operator to move around freely, adding production value when shooting with a small crew. Using the supplied tripod adapter, the unit can also be mounted on a tripod.

Move freely with the vest



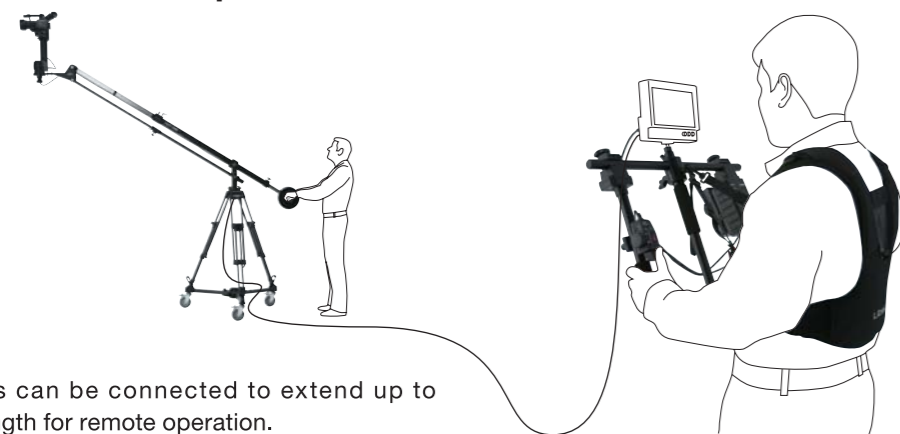
The vest is adjustable to fit any size, as well as the control box free to position.

Stable use with a tripod



Mounts on standard 75mm/100mm jib arms and tripods.

Functional for remote operation



Control cables can be connected to extend up to 30m/99.0' in length for remote operation.

Remote Control

Zoom and focus control for LANC (Sony/Canon) and Panasonic cameras
ZFC-5HD **New**

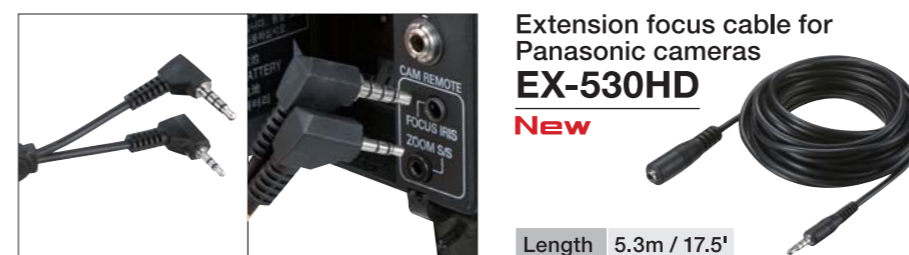
All-in-one zoom and focus control for LANC (Sony/Canon) and Panasonic cameras



Focus control button for Sony
ON / OFF switch for Sony
Zoom speed (High/Low)
REC button (Start/Stop)
Converter switch for LANC and Panasonic
Focus dial for Panasonic
Zoom controller

The ZFC-5HD offers precise and variable zoom speed control available for LANC (Sony/Canon) and Panasonic cameras, controlled by a selector switch. Equipped with a 2-step zoom speed control for LANC cameras. In addition, the ZFC-5HD is equipped with a focus control button for LANC and a focus dial for Panasonic cameras. Exclusively for

The end of the cable splits into two parts with 2.5mm submini-jack and 3.5mm mini-jack on each end. When using Panasonic cameras, simultaneous control of zoom and focus can be achieved by plugging 2.5mm and 3.5mm jacks into the zoom and focus terminals, respectively.



Extension focus cable for Panasonic cameras
EX-530HD **New**

Length 5.3m / 17.5'

LANC cameras, the ZFC-5HD has an on/off remote power switch function which allows your camera to power on/off remotely. This is ideal when shooting with a jib arm or crane. Can be clamped on various equipment: tripod panhandles, jib arm and crane weight bars, stabilizers, monopods, and other accessories. *LANC is a registered trademark of Sony Corporation.

	LANC	Panasonic
Zoom	✓	✓
Focus	✓	✓
REC/STOP	✓	✓
Zoom speed switch	✓	
Camera power ON/OFF	✓	
Weight	0.16kg / 0.4lb	
Size	75x50mm / 3x2"	
Cable length	0.7m / 2.3'	

Accessory Support

Accessory support kit
AS-7K (A-7 included)

A multiple accessory support that supports mounting of LCD monitors and other accessories.

Length	261mm / 10.3"
Attachment	1/4" screw
Weight	0.35kg / 0.8lb

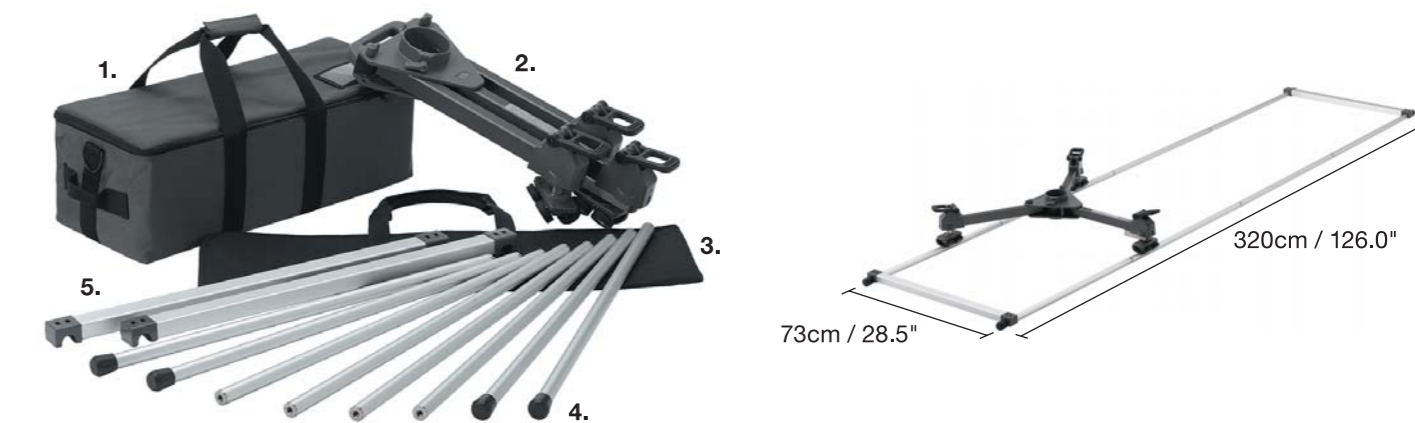


Attachable to the left and right attachments on support column of the SWIFT JIB50, and serve as a monitor arm.



Tracking Rails

Tracking rail standard kit
TR-320



1. Dolly carrying case
2. Dolly
3. Rail carrying case
4. Rail (80cm/31.5" pipe x 8)
5. Rail stopper

The TR-320 includes a set of 80cm/31.5" aluminum pipes to construct a 320cm/126.0" tracking rail. The dolly offers high-performance bearings and a specialized tracking system to prevent derailing. This allows smooth moving shots on either straight or curved rails. With a simple screw-in mechanism, pipes can be easily and firmly assembled, which enables a quick set up. The CR-90 curved rail and the EX-160S straight extension rails are also available, which offers more shooting flexibility.

90 degrees curved rail
CR-90

The CR-90 is a versatile 90° curved rail that can be used with straight rails to make 45° or 90° curves.

Outer rail diameter	168cm / 66.0"
Weight	3.5kg / 7.7lb



Straight extension rail
EX-160S

The EX-160S is an option for those who need to extend an extra straight rail. It includes 80cm/31.5"x4 pipes.

Extension length	160cm / 63.0"
Weight	2.3kg / 5.1lb

